

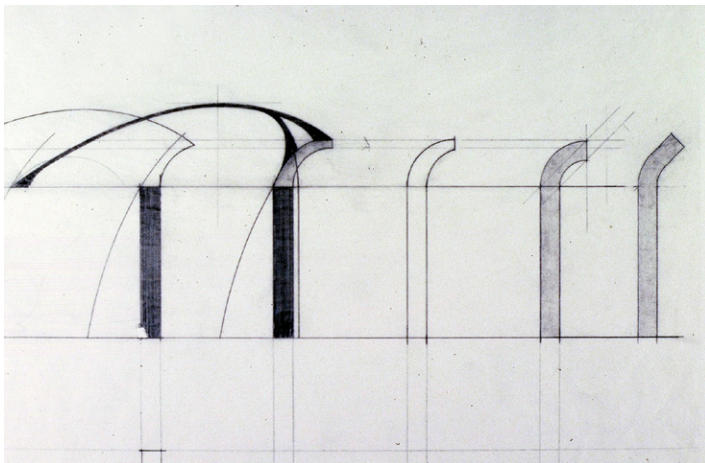
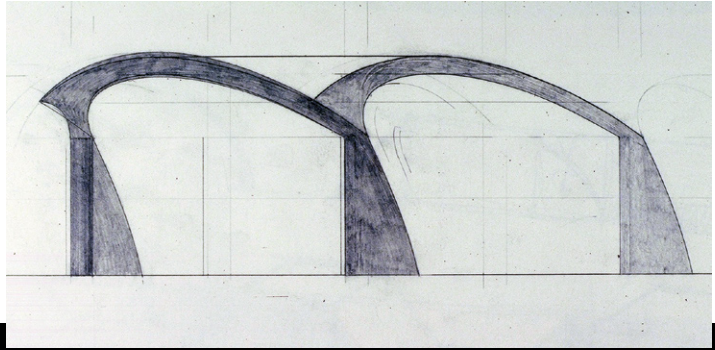


Richard Wright Architects

3200 Main St., Suite 6.3
Dallas, Texas 75226-1569

Phone: 214-747-4240
Fax: 214-939-5233

www.rwrightarchitects.com



Solar House Study

This project existed solely as a study of form and sustainable functionality for a non-specific site in a cold climate. The primary feature was a thermal-mass (Trombe) wall (facing to the left in this photo), consisting of a glass wall, air space, and a concrete wall painted black. Air in the air-space is heated and circulated throughout the building, or exhausted, as circumstances dictate, powered by small fans. The north side of the building (facing to the right in this photo) is contoured to reduce the negative effects of cold north winds. This study also emerged as an interesting display of how light and shadow play across curvilinear surfaces.