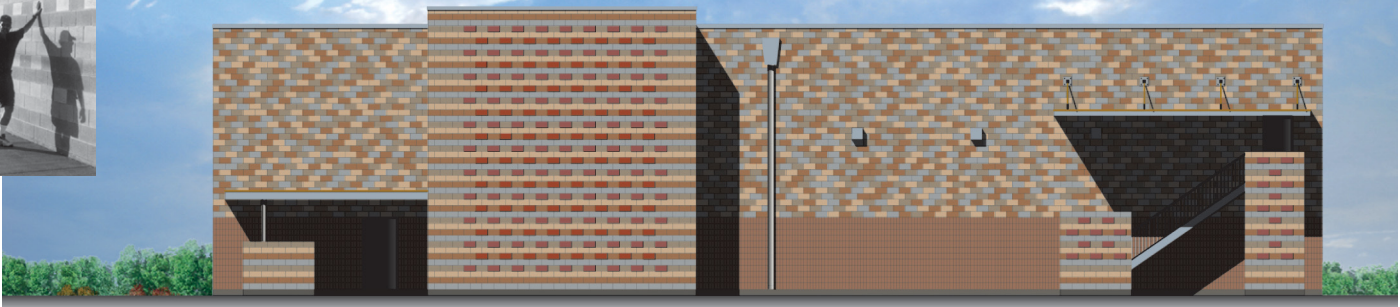
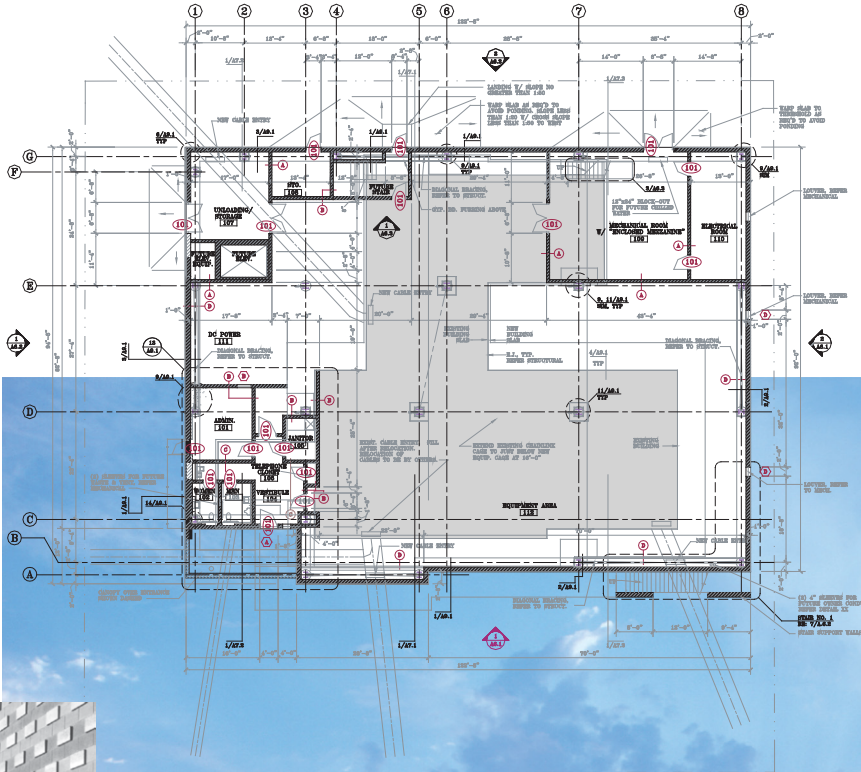


Richard Wright Architects

3200 Main St., Suite 6.3  
Dallas, Texas 75226-1569  
Phone: 214-747-4240  
Fax: 214-939-5233

[www.rwrightarchitects.com](http://www.rwrightarchitects.com)



## Pine Street Switch Facility for AT&T Abilene, Texas



The most challenging aspect of this project was to build around and over the top of a functioning telephone equipment building (shown above as the gray-shaded area), and to ensure that service was not interrupted. The most delightful aspect of it was the dramatic play of light and shadow on the front façade, especially during those moments when the sunlight first strikes the surface parallel to it, accentuating the subtle texture of the wall, and the light between the blocks. The random pattern of four colors and two textures of concrete block was inspired by vernacular use of materials in the rural area surrounding the facility.