

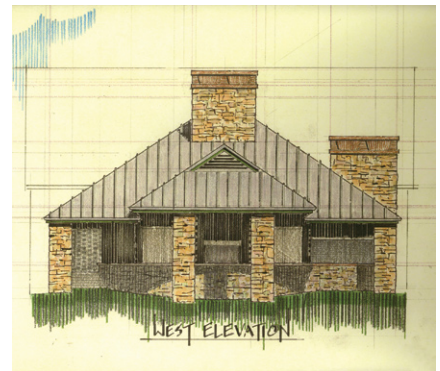
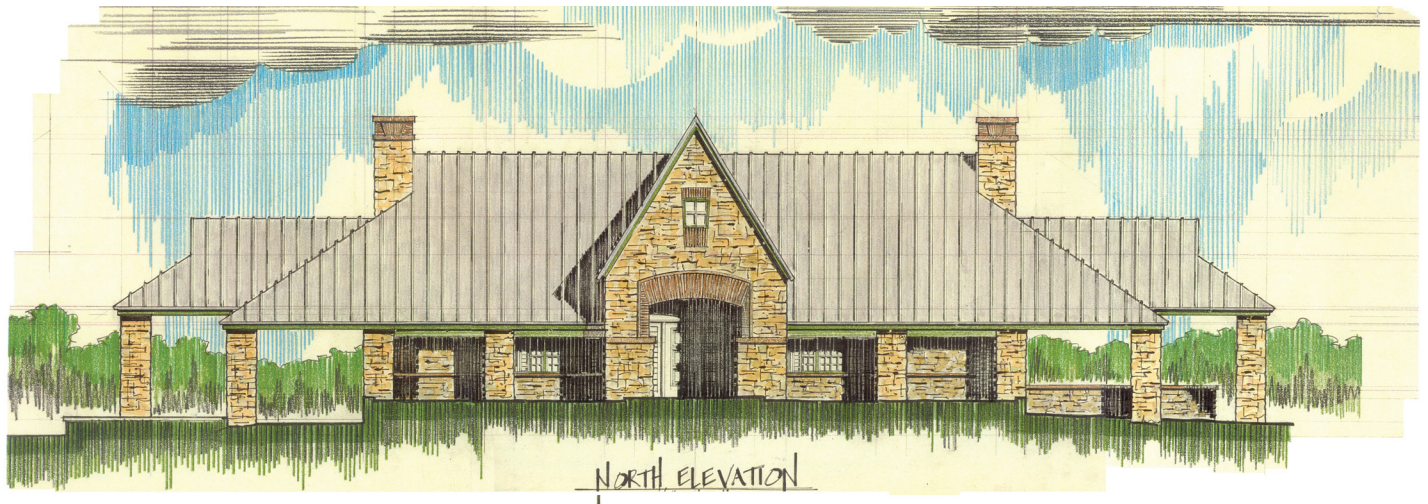


Richard Wright Architects

3200 Main St., Suite 6.3
Dallas, Texas 75226-1569

Phone: 214-747-4240
Fax: 214-939-5233

www.rwrightarchitects.com



Loafing Shed/Country Lodge (Unbuilt) Grayson County, Texas

The initial request was for a "loafing shed" - a place where horses could find shade. It was to be a nice structure with stone supports and a standing-seam metal roof. Well, if you're going to have all that roof, you might as well have a floored attic where you can play poker out in the country. And if you're going to have that, you might as well have restrooms and air-conditioning. And if... well, you get the idea. The Loafing Shed for horses evolved into a Country Lodge for humans.