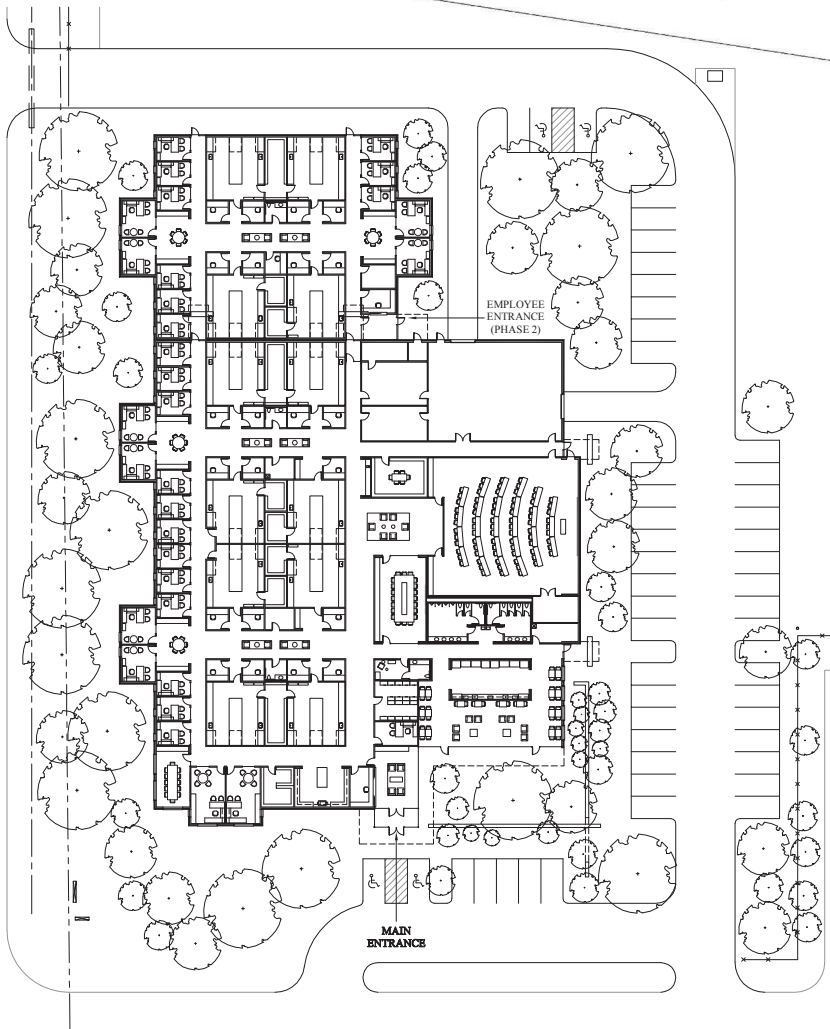
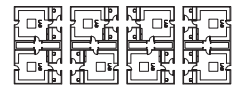
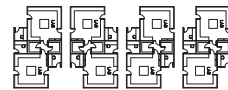
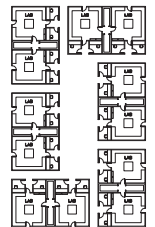
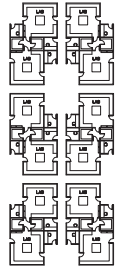
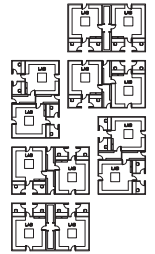




Richard Wright Architects

www.rwrightarchitects.com



## **GAF/ELK R&D Lab/Technology Center (Unbuilt) Ennis, Texas**

34,000 s.f. facility with 9,000 s.f. Phase 2 expansion. Highly functional and efficient facility with a primary design objective to facilitate collaboration among Directors, Scientists, and Lab Techs. Design included numerous places for collaborative exchanges of ideas to take place in a variety of group sizes. Modules were designed which could be arranged in clusters offering a variety of relationships between labs/offices/collaboration areas.

Detailed programming was done to ensure functional needs were understood and provided. Other design parameters included fire separation and emergency egress due to testing rooms involving open flames.