

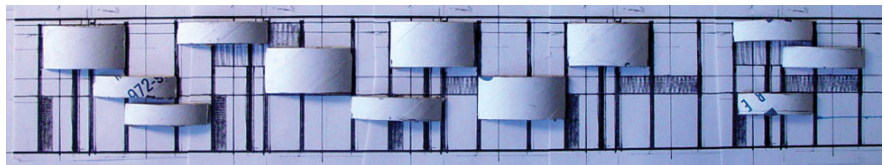
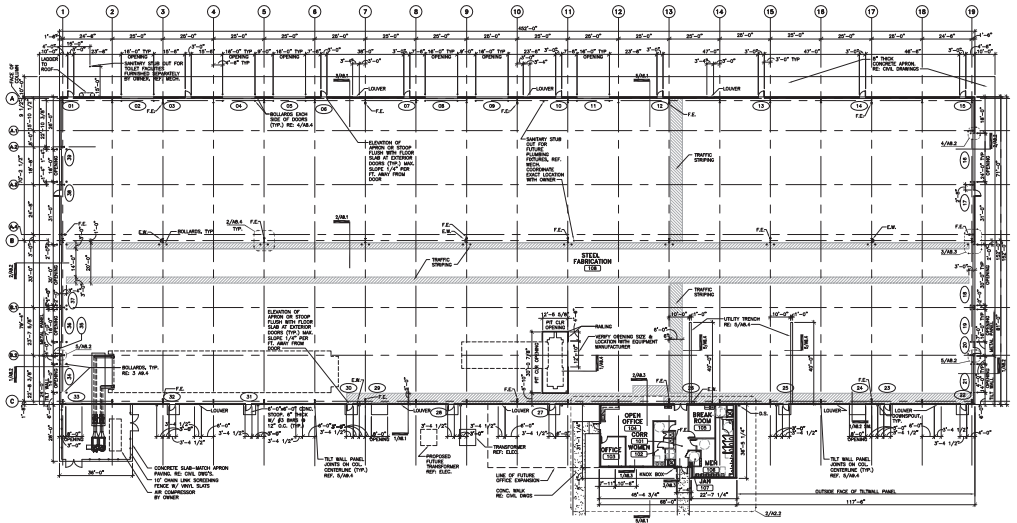
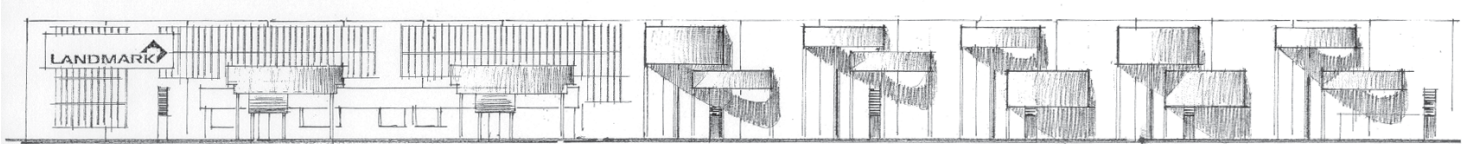


Richard Wright Architects

3200 Main St., Suite 6.3
Dallas, Texas 75226-1569

Phone: 214-747-4240
Fax: 214-939-5233

www.rwrightarchitects.com



Steel Fabrication Plant Decatur, Texas

Company constructs water towers across America, and also fabricates the steel plates which form the upper portion of the "composite" structures. At their Decatur plant, slabs of steel 12'x40' and one-inch thick are off-loaded with electro-magnetic cranes, cut by computer-guided plasma torches into the proper size, and rolled into the proper radius.

The building is designed for expansion, and was located with the ability for future rail access.

RWA offered one idea to embellish the façade of the tilt-wall building with large truncated cylinders of steel, fabricated on site, and serving to cast large looping shadows across the east façade in the morning hours. But that well-received idea did not survive the final budget ax!