

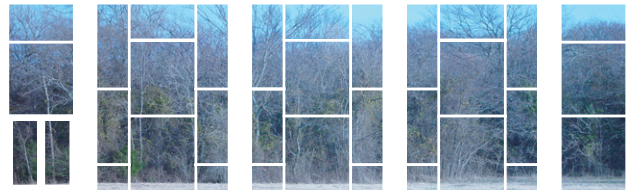
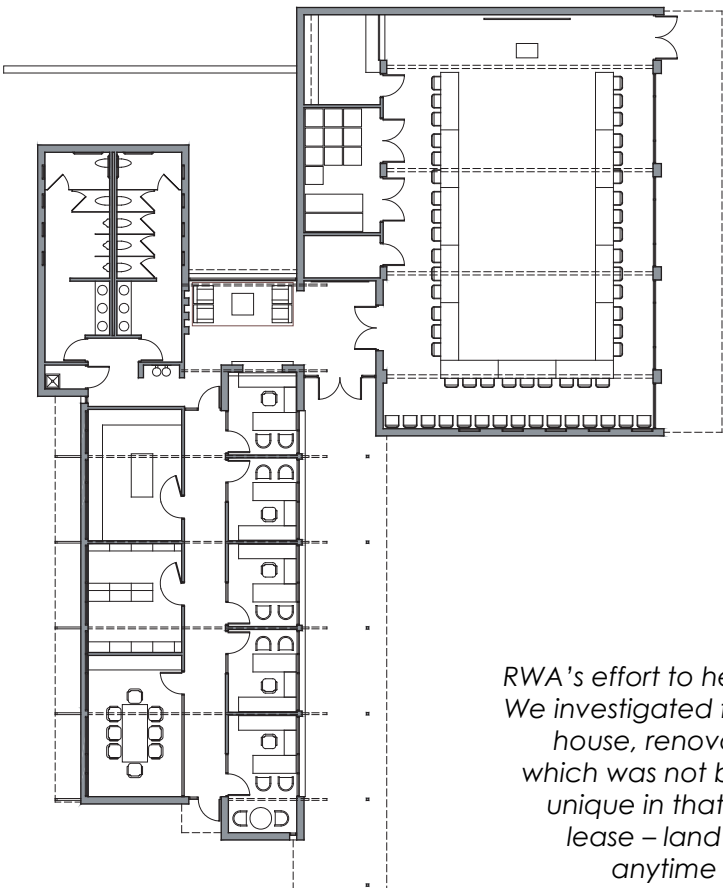
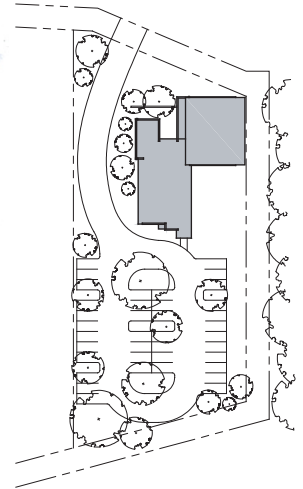


Richard Wright Architects

3200 Main St., Suite 6.3
Dallas, Texas 75226-1569

Phone: 214-747-4240
Fax: 214-939-5233

www.rwrightarchitects.com



United Way of Grayson County Early Scheme Sherman, Texas

RWA's effort to help UWGC find a new home involved numerous options. We investigated finish-out of lease spaces, adaptive re-use of a golf club house, renovation of existing buildings, and this new building scheme which was not built, in favor of the ultimately-built scheme. This site was unique in that it abutted heavily wooded land currently hosting a gas lease – land which was unlikely to be developed into a different use anytime soon. The community room with its large glass wall, was oriented to the east to behold the tree line, here in its winter dress.