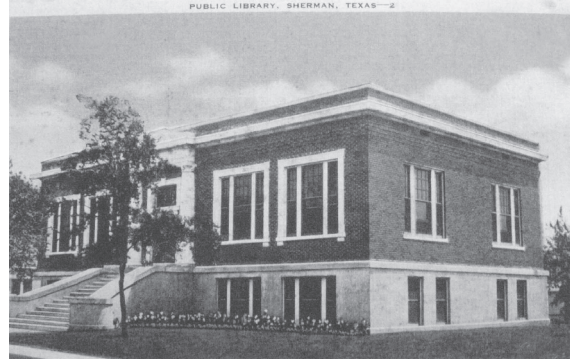




Richard Wright Architects

www.rwrightarchitects.com



Postcard of original Carnegie Library



Red River Historical Museum



Red River Historical Museum beyond, former Walnut Street Church of Christ in foreground



Elevator Addition (2010 Scheme)



Elevator/Entrance Lobby Addition (2004 Scheme)

Red River Historical Museum Sherman, Texas

RWA has assisted RRHM since 1985, beginning with the preparation of a Feasibility Study which evaluated the best use of the original 1915 Carnegie Library, and a recently-acquired church next door. In 1998, Rick Wright assessed the facilities as part of a grant for the Conservation Assessment Program. The most recent project involves the addition of a new elevator to provide accessibility for all patrons, and to facilitate the movement of exhibits into the building. It is located at the back of the building to preserve the historical front façade befitting its place on the National Register of Historic Places.